



MONTHLY MEMBERSHIP PROGRESS REPORT

District 12 O

Results as of: 10/31/2015

GMT: HARVEY WHITLEY

LOCATION TENNESSEE

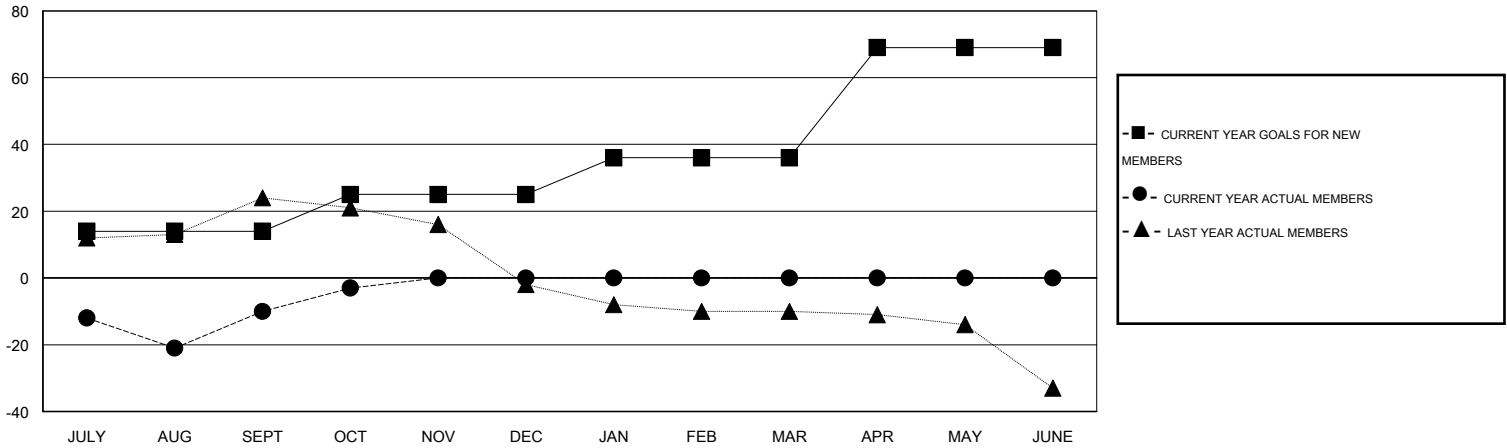
GMT CA 1

Clubs					Members				
RESULTS FOR 2015-2016					RESULTS FOR 2015-2016				
QUARTER	NEW CLUB GOAL	NEW CLUBS	DROPPED CLUBS	NET GAIN/LOSS	QUARTER	NEW MEMBER GOAL	CHARTER AND NEW MEMBERS ADDED	DROPPED MEMBERS	NET GAIN/LOSS
JULY/AUG/SEPT	0	0	1	-1	JULY/AUG/SEPT	14	33	43	-10
OCT/NOV/DEC	0	0	0	0	OCT/NOV/DEC	11	28	21	7
JAN/FEB/MAR	0	0	0	0	JAN/FEB/MAR	11	0	0	0
APR/MAY/JUNE	1	0	0	0	APR/MAY/JUNE	33	0	0	0

GOALS AND ACTUAL NEW CLUBS CUMULATIVE



GOALS AND ACTUAL MEMBERS CUMULATIVE



DROPPED CLUBS: 1	13 CLUBS OF 39 ADDED 1 OR MORE NEW MEMBERS	<u>GENDER DISTRIBUTION</u>	
		MALE	588 (64.26%)
<u>DROPPED MEMBERS</u>	CLICK HERE FOR HEALTH ASSESSMENT DATA	FEMALE	327 (35.74%)
DECEASED		4	FAMILY UNIT MEMBERS
CLUB CANCELLED	7	HEAD OF HOUSEHOLD	110
OTHER	53	NON-HEAD OF HOUSEHOLD	111
TOTAL	64		